

Line: Directional Dominance

Line Direction

There are 3 major directions of line.

Line Direction: Horizontal



Line Direction: Vertical

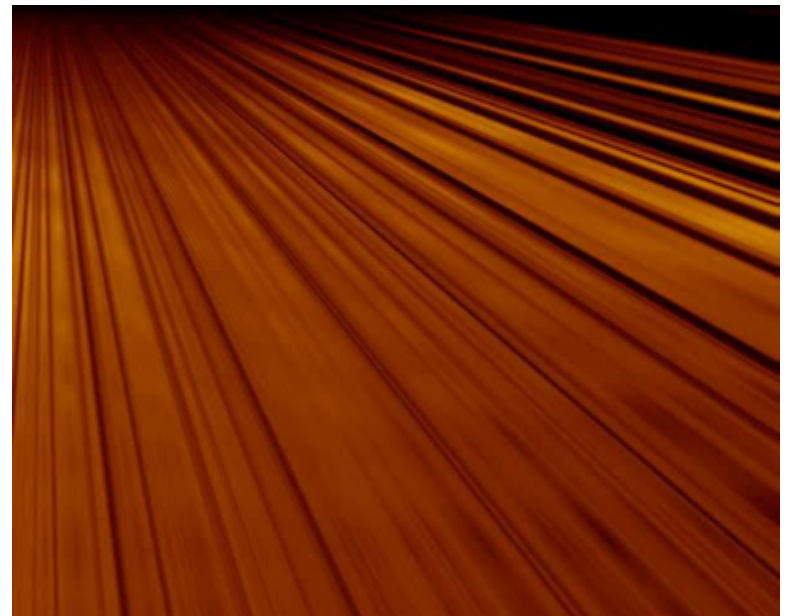
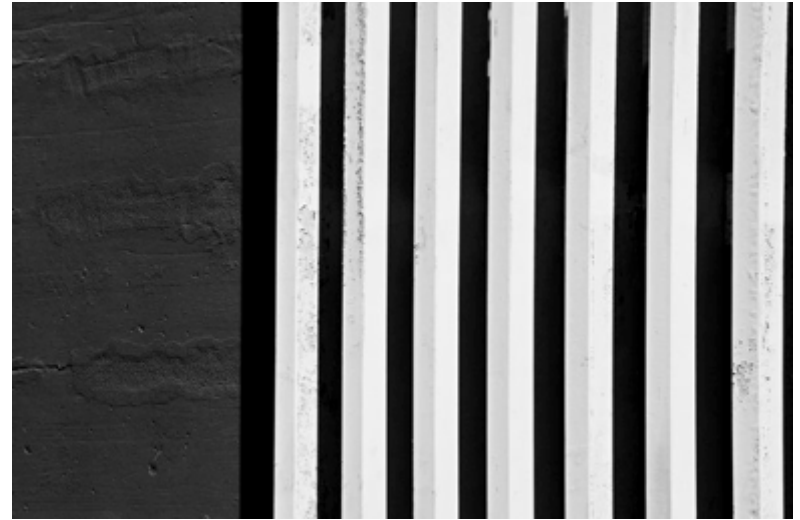


Line Direction: Diagonal



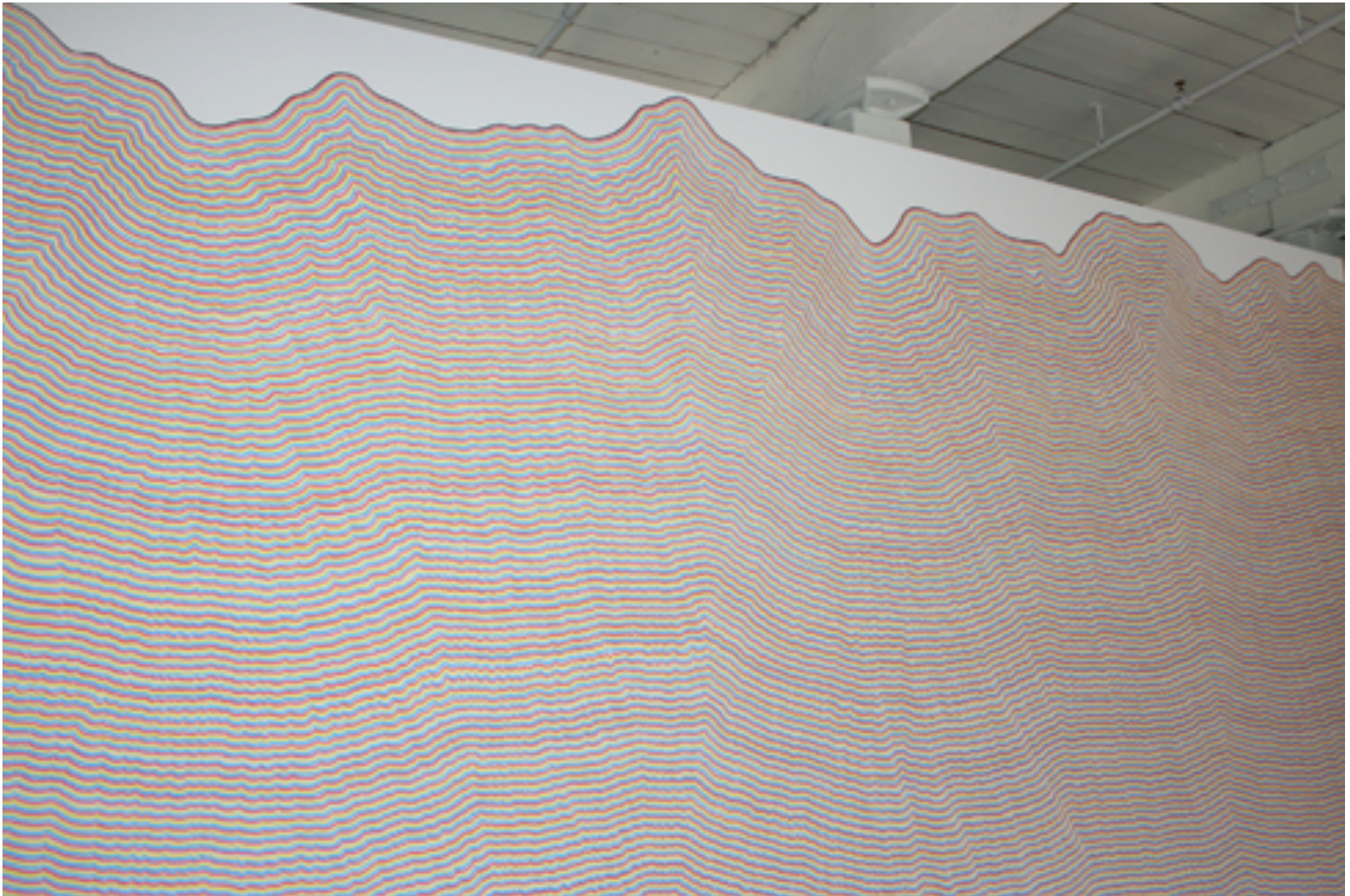
Line Direction

A strong sense of direction within a design can set the tone or overall mood for the piece (i.e. strength, calm, motion)



Directional Dominance

When used repetitively, lines create a directional force. When these lines create an obvious sense of motion across the picture plane, this is called Directional Dominance.



Directional Dominance: can be used to create emphasis



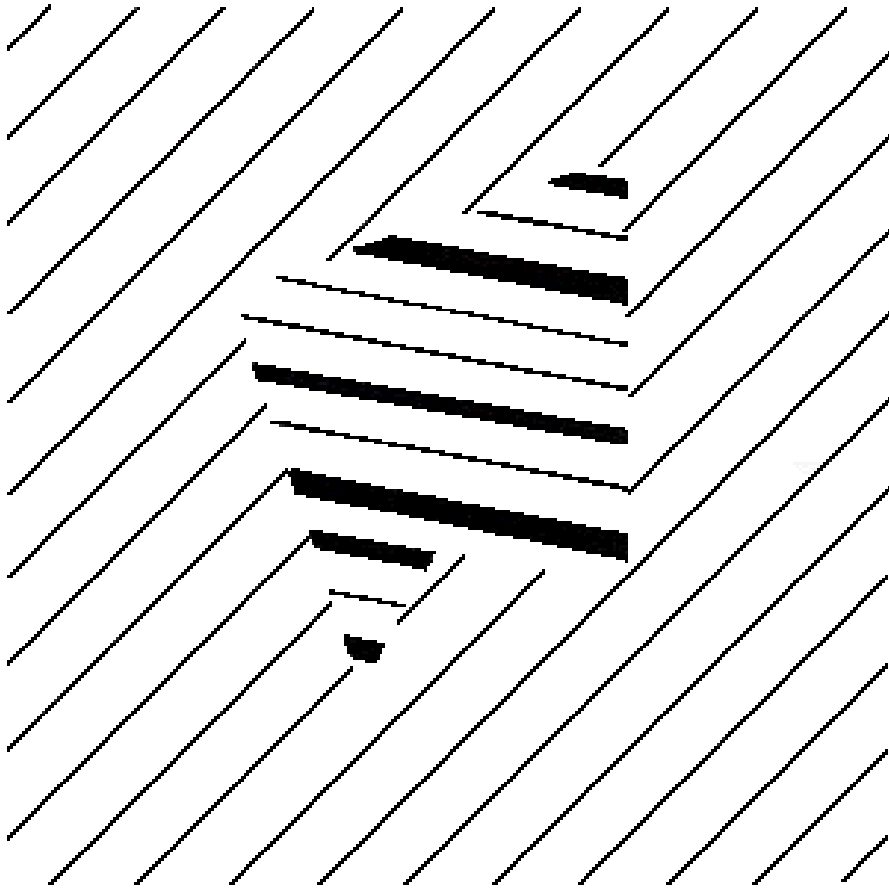
Photo taken by Brandi Redd

Directional Conflict- a change or break in line direction



“Selfportrait” captured by M. Lorenzo

Directional Conflict



- Create a Focal Point
- Avoid outlining the point of intersection – creates tension

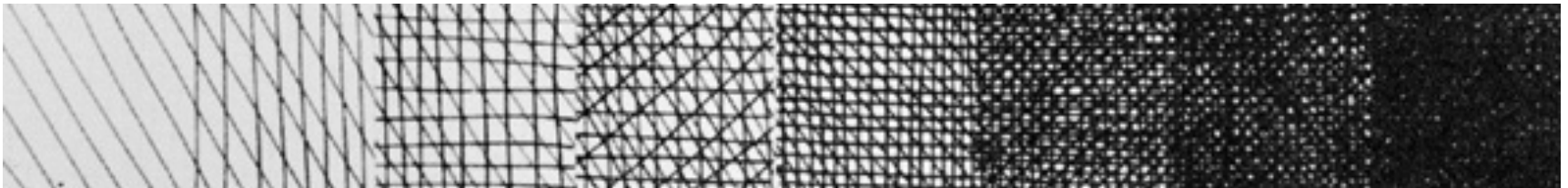


Il Lee

Line as Value

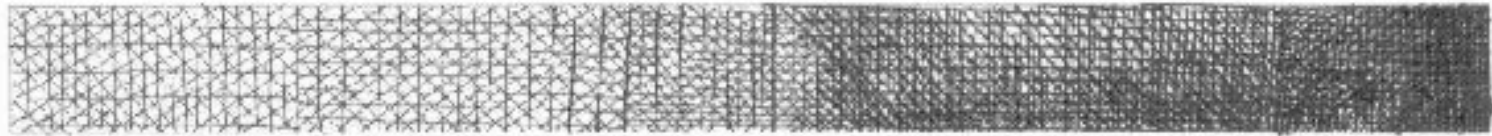
Cross-hatching - Overlapping lines used for shading.

Tip: To create dark values, draw a series of lines in close proximity to one another, the closer the lines are the darker it appears.



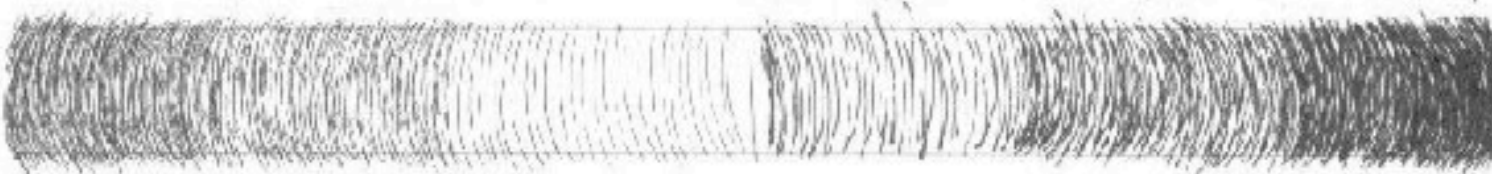
.25 NIB

.50 NIB



.25 NIB

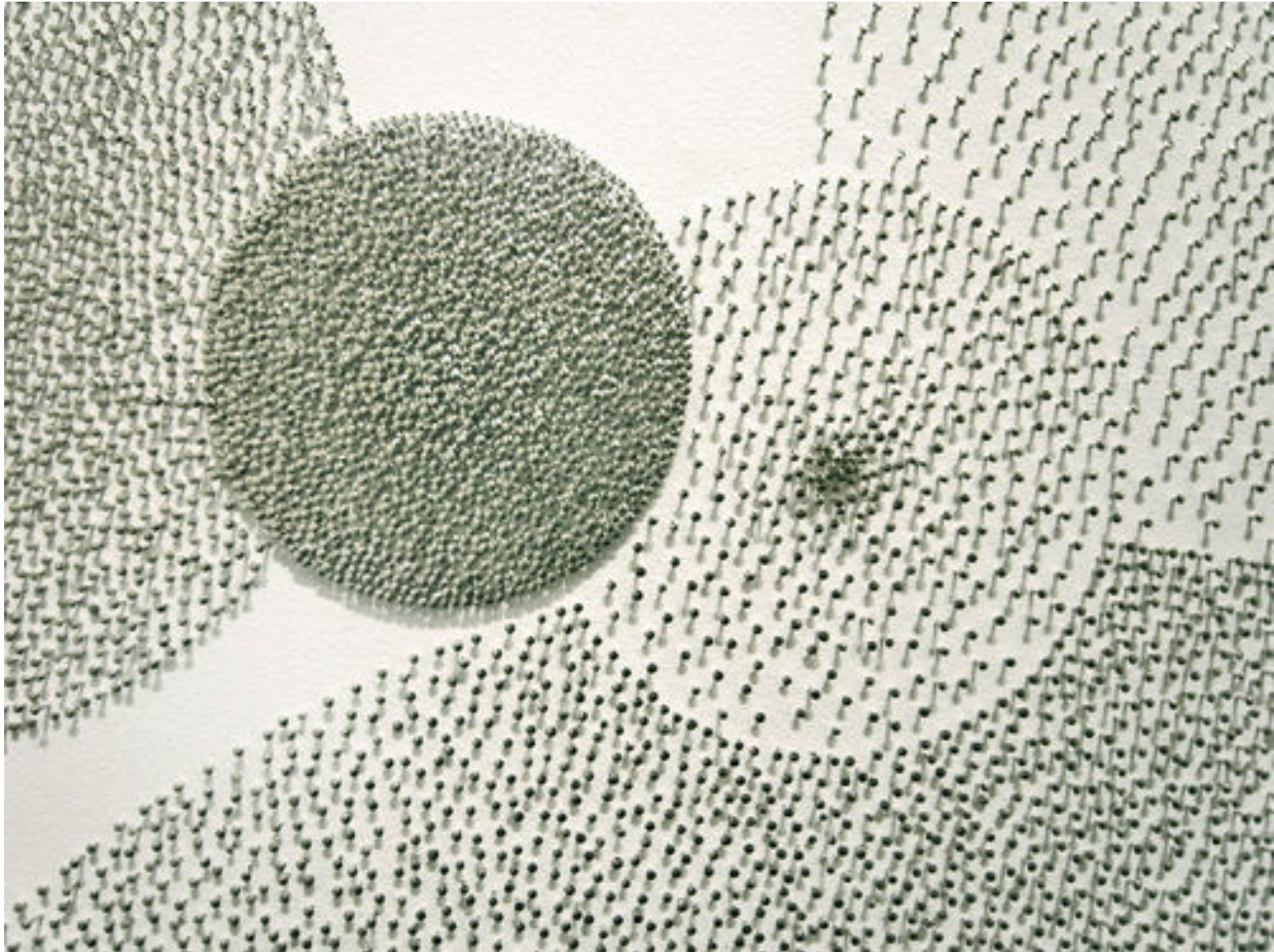
.50 NIB



.25

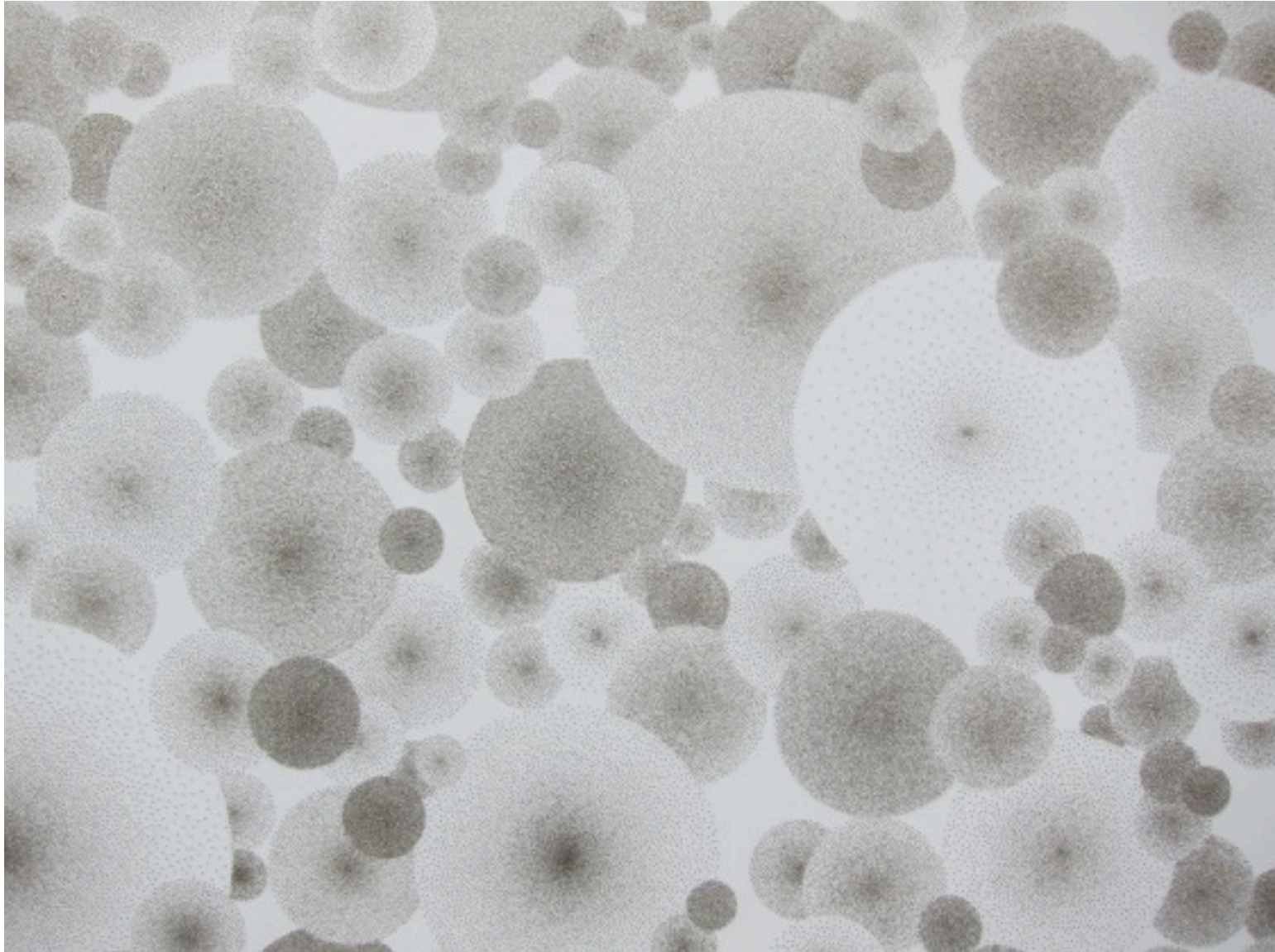
.50

Compressed & Expanded Space



Tara Donovan

Compressed & Expanded Space



Tara Donovan

Compressed & Expanded Space



Hiroyuki Doi

Student Examples



